



# CUBIC DRIVE-IN PALLET RACKING



Make the most of your floor space with EAB's cost-effective solution.

Built to last.®



## SPACE EFFICIENT WAREHOUSE SOLUTION

With EAB's Cubic drive-in pallet racking system, you get a utilisation rate of up to 80% of your warehouse space, as both floor space and ceiling height are used to the maximum. Cubic is built in depth and the pallets are handled from the long side according to the FILO principle (first in, last out).

Drive-in pallet racking is a type of manual pallet handling of volume goods. Handling is a little more time consuming but just as space efficient as conveyors and Radioshuttle. Thanks to its simplicity, it is a highly cost-effective solution.

A reinforced bottom profile with guide for forklift trucks is available as an option. The bottom profile is used for protecting the pallet racking uprights against impact.



### STRONG ATTACHMENT

The bracket is attached to the post using bolts, which provides a very strong attachment. The pallet support hooks onto the bracket and is locked in place using bolts on both the top and bottom.

### GUIDE

A clever guide that facilitates placement of the pallet, while protecting the front of the pallet support is available as an option. The guide is attached to the front bracket.

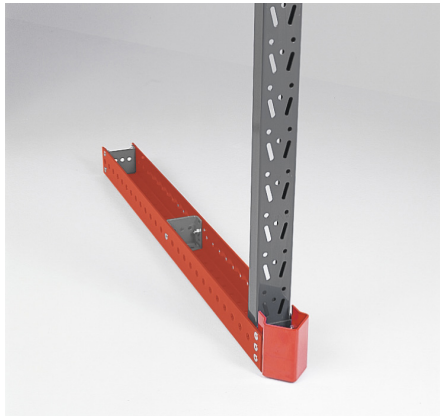
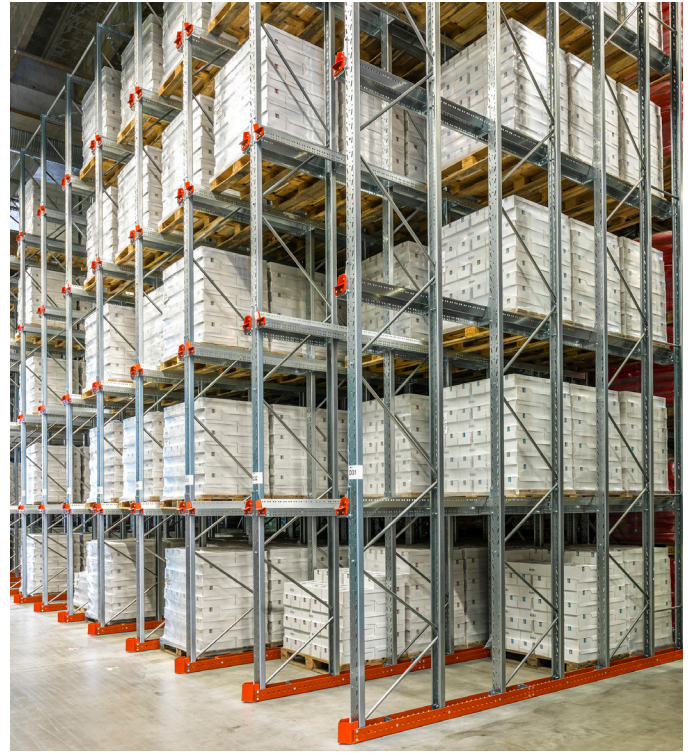
### CONSTRUCTION

Pallet supports, and brackets are adapted to suit different amounts of load overhang. The pallet support is designed so that the pallet is automatically positioned in the right location.

# CUSTOMISE A SOLUTION THAT SUITS YOU

With our own in-house design team and production department at our factory in Sweden, we offer you flexibility and the ability to make adaptations to your solution. Thanks to a durable basic design and carefully selected materials, no matter what solution you choose, your maintenance and operating costs will always be low. With safety in mind, we customise and design a suitable solution for your business.

Because storage solutions are counted as part of the warehouse staff's workplace, there are numerous rules and safety regulations that must be complied with and that are governed by several different authorities. Therefore, we also offer a wide range of protection for our pallet racking.



Reinforced bottom profile with forklift truck guide.



Pallet stop prevents the pallet from being pushed in too far.



Console with steering.

## CUBIC DRIVE-IN PALLET RACKING

### Design

Cubic drive-in pallet racking is based on a proven design that puts safety and function first. For example, all brackets are screwed into the post and stabilisation is done through rods mounted both in the back and at the top.

### Safety requirements

Cubic complies with the current safety requirements in the European Standard for warehouse storage system with designations SS-EN 15620 and 15635 and the Nordic Standard INSTA 252, Swedish Standard SS2644, which includes instructions for material selection, dimensioning, testing, assembly and marking.

### Load

Each pallet racking is uniquely dimensioned, based on pallet weight, pallet size, frame height and number of levels.

### Deliveries

A load sign to be mounted in a clearly visible location accompanies all deliveries.

### Surface treatment

Uprights and braces are galvanised. Footplates and bottom profiles are painted. Orange is the standard colour. Pallet supports, brackets and top profiles are galvanised. For dimensions, see the next page.

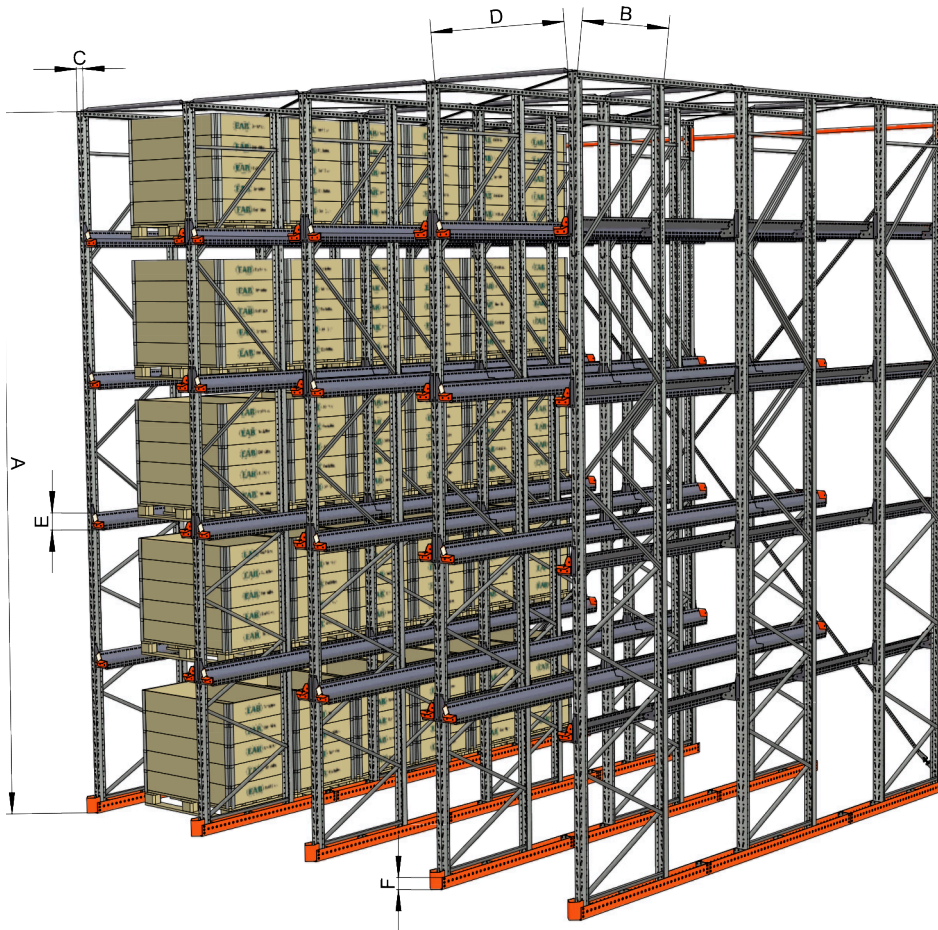
Learn more about the Cubic drive-in pallet racking system and check out our wide range of storage solutions.

Scan the QR code or go to [www.eab.info](http://www.eab.info)



# TECHNICAL DATA

|   |                                   |                                       |
|---|-----------------------------------|---------------------------------------|
| A | Frame height                      | 1500-8000 mm.                         |
| B | Distance between uprights         | c/c 500, 800, 1100, 1250 and 1500 mm  |
| C | Post width                        | 90 mm, 110 mm                         |
| D | Section 1350, width               | 1350 mm (free between upright)        |
|   | Section 1400, width               | 1400 mm (free between uprights)       |
|   | Section 1450, width               | 1450 mm (free between uprights)       |
|   | Section 1500, width               | 1500 mm (free between uprights)       |
|   | Section 1550, width               | 1550 mm (free between uprights)       |
|   | Free dimension at pallet supports | 1060 mm (free between screws 1050 mm) |
| E | Pallet support, height            | 75 mm                                 |
| F | Bottom profile, height            | 100 mm                                |
|   | Bottom profile, sheet thickness   | 5 mm                                  |



Built to last.®

STORAGE EQUIPMENT | DOORS | STEEL BUILDINGS  
MADE IN SWEDEN | +46 371 340 00 | WWW.EAB.INFO

